

# Nimbus Digital Combination Locks

## Semi Flush-Fit

### Special Notes

Before installing the Nimbus Digital Combination Lock, load the battery and familiarize yourself with the operation and programming.

Unless manufactured to special order, the lock is supplied in the "PRIVATE" operating mode with a four-digit code.

In this mode, the user must enter a four-digit User Code to open it. The unit will re-lock itself after four seconds. The lock can be opened at any time using the Master Code.

Unless manufactured to special order, the default Master Code is 11 33 55 77 and the default User Code is 22 44.

**These codes are common to all standard locks and it is very important that you set your own personal Master and User Codes.**

**Your lock is not secure until you have changed the default Master Code and User Code.**

Keep a safe record of your master code as it is not possible to make any programming changes without it.

Please see programming guide to set your own codes.

### ENSURE BATTERY IS FITTED BEFORE FIXING TO CLOSURE

- Step 1** Load the 2 x AAA Batteries and fit the Battery Holder using the M4 x 10mm screw provided. Tighten to 1Nm maximum. Place the Semi-Flush Fit Trim Ring onto the back of the lock. **Failure to fit the Battery Holder will result in the batteries falling out if the door is slammed.**
- Step 2** Cut aperture in the door using the template or dimensional data provided, ensuring that the position of the Digital Combination Lock will allow clearance for the selected cam to work. **If using the template, please ensure that it is the correct size. Copies may be distorted.**
- Step 3** Pass the Digital Combination Lock through the door aperture from the front of the door.
- Step 4** Fit the Plastic Clamp Box over the rear of the Digital Combination Lock.
- Step 5** Using 2 x M4 Fixing Screws of the appropriate length (refer to data sheets for correct screw lengths), tighten the upper and lower screws to no more than 1Nm.
- Step 6** Select the cam which suits your door and frame and attach

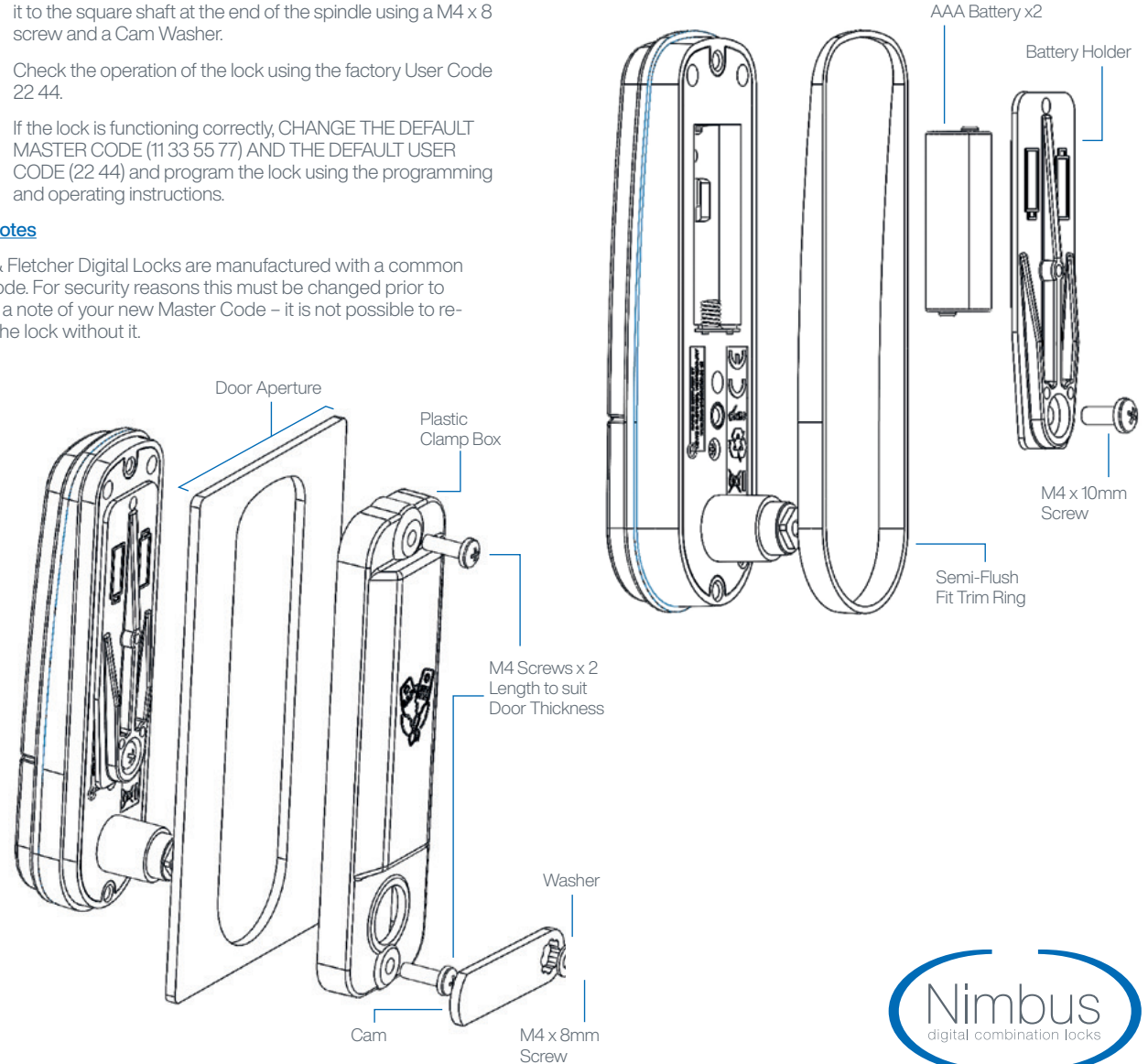
it to the square shaft at the end of the spindle using a M4 x 8 screw and a Cam Washer.

**Step 7** Check the operation of the lock using the factory User Code 22 44.

**Step 8** If the lock is functioning correctly, CHANGE THE DEFAULT MASTER CODE (11 33 55 77) AND THE DEFAULT USER CODE (22 44) and program the lock using the programming and operating instructions.

### Special Notes

All Lowe & Fletcher Digital Locks are manufactured with a common Master Code. For security reasons this must be changed prior to use. Keep a note of your new Master Code – it is not possible to re-program the lock without it.



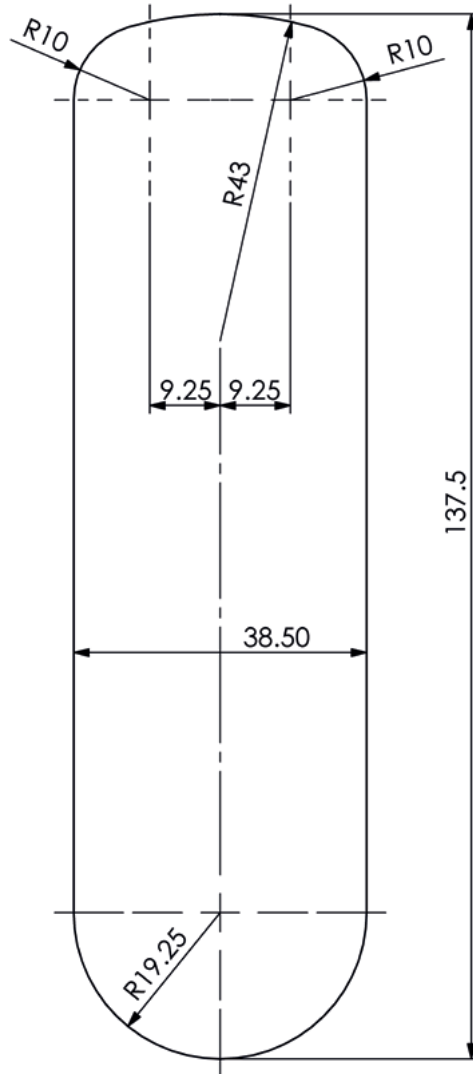
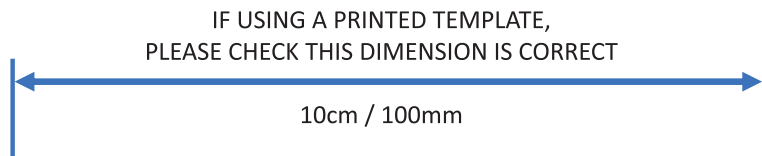
# Nimbus Digital Combination Locks

## Semi Flush-Fit

### IMPORTANT NOTE

Before drilling fixing holes, please ensure that the position of the lock when fitted will allow clearance for the cam to function.

Please check that template is correct size before use – copies can be distorted.



### LOWE & FLETCHER LTD

Moorcroft Drive, Wednesbury, West Midlands, WS10 7DE, UK  
Tel: +44 (0) 121 505 0400  
Email: sales@lowe-and-fletcher.co.uk  
www.lowe-and-fletcher.co.uk

### LOWE & FLETCHER, INC.

650 Airport Place, Norton Shores, MI-49441, Michigan, USA  
Tel: +1 (616) 994 0490  
Email: sales@loweandfletcherinc.com  
www.loweandfletcherinc.com

### EURO-LOCKS SA NV

Rue de la Fontaine 8, 6600 Bastogne, Belgium  
Tel: +32 61 212 261  
Email: sales@euro-locks.be  
www.euro-locks.be

### EURO-LOCKS SA

1 Rue du Stade, 57730 Folschviller, France  
Tel: +33 (0) 3 87 92 61 11  
Email: euro-locks@euro-locks.fr  
www.euro-locks.fr

### EURO-LOCKS GMBH

Am Bruchwald 22, 66280 Sulzbach/Neuweiler, Germany  
Tel: +49 (0) 6897 9072 0  
Email: vertrieb@euro-locks.de  
www.euro-locks.de

### EURO-LOCKS SP. Z O.O.

ul. Pawła 29, 41-708 Ruda Śląska, Poland  
Tel: +48 (32) 344-78-70, -82, -84  
Email: sekretariat@euro-locks.pl  
www.euro-locks.pl